

Dear Participants of the HES-GEO Partnership Workshop on 26 September 2023

Dear Colleagues,

the Partnership Workshop is approaching. We are looking forward to welcome you soon in Krakow. Below you will find the most necessary information about the workshop.

Table of contents

1. **Meeting agenda**
2. **Transport options to Krakow**
3. **Workshop Venue**
4. **Accommodation**
5. **Transport option to the Venue**
6. **Presentation guidelines**

1. Meeting agenda

| Time slot | 26 September 2023 |
|-----------------------------|---|
| 13.30-15.15 | I part: <ul style="list-style-type: none">– Introduction– Presentation of six teams operating within the HES-GEO Project and Centre of Excellence and plans for cooperation– Presentation of NCBIR: <i>Program Widening participation and strengthening the European Research Area.</i> |
| 15.15-16.00 | Coffee break |
| 16.00-18.30 | II part: <ul style="list-style-type: none">– CoE cooperation possibilities– Presentation of the partners– “Round table” - Agreements discussion– Scope of cooperation discussion |
| 18.30- until the last guest | Dinner |

2. Transport options to Krakow



by plane: <https://krakowairport.pl/en/homepage/>

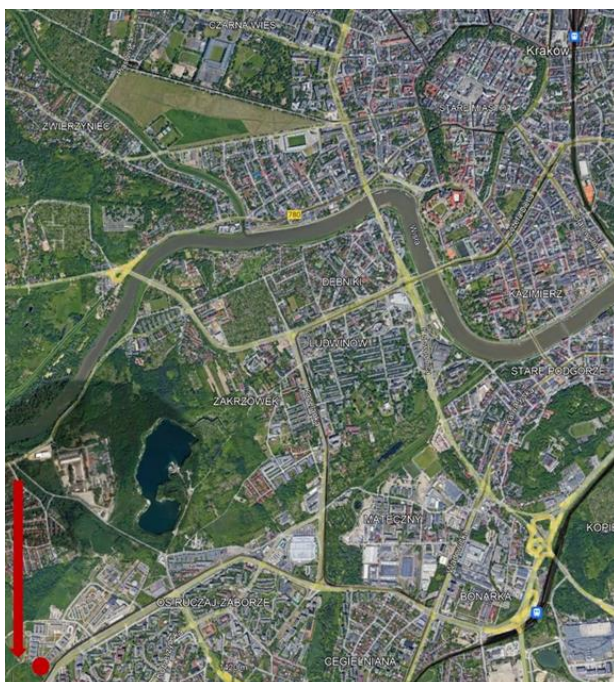
by train: <https://www.pkp.pl/en/>

by motor vehicles: A4 motorway (East-West) or S7 expressway (North-South)

3. Workshop Venue

Campus of the 600th Anniversary of the Jagiellonian University Revival

<https://uj.wkraj.pl/html5/index.php?id=48942&lng=EN>



Building of the teaching and library complex 7 Gronostajowa St. 30-387



Kraków

4. Accommodation

Krakow is a tourist city therefore accommodation possibilities are almost unlimited. However, we recommend hotels located in the vicinity of the conference venue:

Campanille Krakow-South <https://krakow-south.campanile.com/en-us/contact-hotel-access>.

With the password "UJ" guests receive a 15% discount from the price of the day.

Contact the hotel by email: reception.krakow.south@campanile.com or by phone: +48 576 805 801 and mention the password "UJ" to book your room. Please also give your name (first and last), dates of your stay, and leave your email and/or phone number.

Vanilla Aparthotel <https://aparthotelvanilla.pl/en/>



Contact one of the following email addresses: info@aparthotelvanilla.pl;
krystyna.kania@aparthotelvanilla.pl (manager)

5. Transport option to the Venue

The **campus area** is located app. **20 minutes** from the old city centre (**trams No 52 & 18, also 11&17 direction: Czerwone Maki P+R, tram stop: Kampus UJ**).

The easiest way to travel around Kraków is by public transport. Passengers should purchase a ticket before boarding from a ticket machine, the information centres, or in application/trip planner [JakDojade](#) (available for Android and iOS). Ticket machines are located directly at bus/tram stops (payment in cash or with credit/debit card) as well as on board of most of the vehicles (payment with credit/debit card). Please note, that the ticket must be first validated in the bus/tram in the stamping machine, otherwise it is not valid! Once validated, you can change as many times as you want until the ticket expires. For current prices and further information, visit <https://www.mpk.krakow.pl/en/prices-of-tickets>

Travelling to Conference Venue from the airport: Take the **bus 300** direction: **Os. Podwawelskie**, change at **Przystanek Centrum Kongresowe ICE** for **tram 18 or 52** in the direction to **Czerwone Maki P+R**, the eight stop is **Kampus UJ**, where the venue takes place.

Travel to the conference venue by train: From the Kraków Main Station (stop called **Teatr Słowackiego**) take the **tram 52** in the direction to **Czerwone Maki P+R. Kampus UJ** stop is the 14th (23 minutes according to the schedule).

It is also possible to take a train from the airport to **the Main Railway** station and then the **tram 52** the timetable is available here:

https://www.kolejemalopolskie.com.pl/brepo/panel_repo/2023/06/05/lesuut/ska1-zrj-11-vi-2-ix-23.pdf

Travelling to the Campanile Krakow-South Hotel or the Vanilla Aparthotel: Both are located at the **tramline of 11, 17, 18 & 52** in the direction to **Czerwone Maki P+R**. To reach Campanile Krakow-South you need to get off the tram at Norymberska (2 stops before **Kampus UJ**), to reach Vanilla Aparthotel please get off the tram at Chmieleniec (1 stop after Kampus UJ).

Over-night service: If you are coming to Kraków at night, you can still use public transport. There are regular night lines. We recommend using the [JakDojade](#) application / trip planner to find the best connection for you.

6. Presentation guidelines



All Guests are invited to have a 12-minute presentation of their Institution, with the emphasis on:

- presentation of proposals and ideas for research topics related to HES (Human-Environmental Systems);
- identification of opportunities for joint projects and identification of funds and programmes in which partners can participate, e.g. Visegrad, CEEPUS, Erasmus, Horizon (not all can start from all countries)
- identification of financing opportunities for joint projects (where funds can be obtained from institutions in partner countries)

Preferable format: PowerPoint or PDF.

Do not hesitate to contact us if you have any questions.

With best regards,

Dr hab. Agnieszka Wypych, prof. UJ,

CONTACTS:

**BUILDING EXCELLENCE IN RESEARCH OF HUMAN-ENVIRONMENTAL SYSTEMS WITH
GEOSPATIAL AND EARTH OBSERVATION TECHNOLOGIES**

Institute of Geography and Spatial
Management

Jagiellonian University

Gronostajowa 7

30-387 Kraków, Poland

Phone: +48 12 664-53-25 Fax: +48 12-
664-5385

Dr. hab. Agnieszka Wypych, prof. UJ,
Email: agnieszka.wypych@uj.edu.pl

